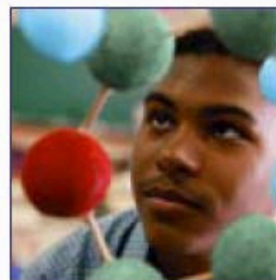
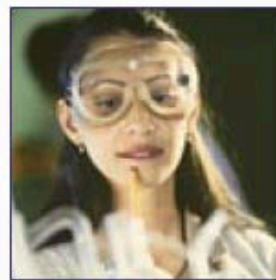


# A+ Schools

*The A+ Schools Program encourages students to stay in school, make career plans, tutor younger students, and graduate with the skills and knowledge required for career success or to pursue advanced education.*



Missouri Department of Elementary  
and Secondary Education

**QUESTIONS & ANSWERS – POSTSECONDARY**

## Post-Secondary Questions and Answers:

<a href="#">General Questions</a>	2
<a href="#">Eligibility</a>	
▪ General Questions	2
▪ Fulltime	3
▪ GPA	3
▪ Non-Repayable Federal Financial Assistance & Scholarships	3/4
<a href="#">Enrollment</a>	4
<a href="#">Program of Study</a>	4
<a href="#">Student Accommodations</a>	4
<a href="#">Reimbursement</a>	5/6

## General Questions:

### 1) Are there four-year institutions that honor A+ financial incentives?

No. A+ funds may only be used at a public community college and or at career-technical schools located in Missouri.

### 2) There are several four-year institutions that are offering “A+ scholarships”. Are they the same as the A+ financial incentive?

No.

## Eligibility:

### General Questions:

### 1) What evidence is provided by an A+ high school to a community college or career-technical school to indicate a student is eligible to receive A+ financial incentives?

The Department of Elementary and Secondary Education provides designated A+ high schools with an embossing seal to be used on eligible student’s transcripts.

### 2) What must a student do to remain A+ eligible at a community college or career-technical school?

A student must be enrolled full-time in a program of study and maintain a minimum 2.5 cumulative GPA. Students must also apply for non-repayable federal financial aid (FAFSA/SEOG) each subsequent year of eligibility.

### 3) If a student has met all of the requirements to receive a post-secondary degree but does not apply for graduation, is he/she still eligible to receive A+ financial incentives to pursue another degree?

No. A student who has met the requirements for a post-secondary degree using A+ financial incentives shall be notified that his/her eligibility has been exhausted.

### 4) If a student’s four year eligibility has expired and he/she has not completed six terms/semesters, is the student still eligible to receive A+ financial incentives?

No. A+ financial incentives must be used within four years of high school graduation.

- 5) **Is there or is there going to be an extension of the benefit period for students who are called to Active Duty immediately after high school?**

A student called to Active Duty (National Guard and/or Reserve) immediately after high school should have his/her eligibility extended for the length of time spent on Active Duty Status. The student is responsible for providing the post-secondary institution with appropriate documentation (a copy of the student soldier's DD214). For additional information go to:

<http://go.missouri.gov/press/press032403.htm>.

**Full-time enrollment requirement:**

- 1) **Do A+ eligible students have to be enrolled full-time in a post-secondary program of study to receive A+ financial incentives?**

Yes.

- 2) **If a student who is enrolled in a program of study that requires an internship or clinical experience, that prohibits full-time enrollment as defined by the institution, still eligible to receive A+ financial incentives?**

A student enrolled in a program of study which requires, as part of the program, the successful completion of an internship or clinical experience remains eligible for A+ incentive funds for this portion of the program.

- 2) **Do developmental courses taken at a community college during the student's first year of enrollment count toward meeting the full-time enrollment requirement?**

It is the responsibility of the community college in which the student enrolls to determine whether or not the student's program equates to a full-time load as prescribed.

**Grade Point Average (GPA):**

- 1) **If a student has a GPA of 2.5 for the fall semester but a cumulative GPA of 2.27, would this student be eligible to receive A+ financial incentives?**

No, the cumulative GPA is used to determine A+ eligibility. The student would not be eligible until the overall GPA is 2.5 or higher.

### **Non-Repaying Federal Financial Assistance & Scholarships:**

- 1) May a student receive scholarships without jeopardizing his/her A+ financial incentive?**

Yes, if the [local] scholarship has restrictions those must be honored (i.e., tuition only). If there are not restrictions on local scholarships, those funds may be used for non-A+ eligible expenses such as books, tuition surcharges and other fees.

- 2) Is a student required to annually submit a federal financial aid application before A+ incentive funds are available to the student for tuition and general fees?**

Yes.

### **Enrollment:**

- 1) If a student elects to attend a four-year institution after high school graduation and then transfers back to a community college or a career-technical school, is the student still eligible to receive A+ financial incentive funds?**

Yes. A student transferring from a four-year institution into a two-year institution must transfer with a 2.5 GPA and enroll on a full-time basis in a program of study.

- 2) May a student enrolled at a four-year institution or community college take courses and use A+ financial incentives at another community college during the summer term for the purpose of accelerating the degree program at the four-year institution or community college?**

No.

- 3) May a student simultaneously attend two eligible post-Secondary institutions and receive A+ financial incentives?**

Yes, however, both institutions must be A+ eligible. The institution granting the certificate or degree would claim the student for reimbursement purposes.

### **Program of Study:**

- 1) What is a program of study?**

A program of study is a certificate or degree plan that is offered by the college or career-technical school.

- 2) May an A+ eligible student who enrolls in a one-year LPN program transfer into an RN program?**

Yes, provided that the RN program is at an A+ eligible institution.

## **Student Accommodations:**

### **1) Are students with disabilities eligible for A+ incentive funds?**

Yes, provided they meet the requirements of the A+ program.

## **Reimbursement:**

### **1) What expenses are covered by the A+ program for eligible students attending a public community college or career-technical school?**

Financial incentives are available to eligible students through the A+ Schools Program cover the cost of tuition and fees that are assessed to all full-time students. The A+ program will reimburse eligible A+ expenses at the rates submitted by the post-Secondary institution to the Department of Elementary and Secondary Education (DESE) or the Missouri Community College Association (MCCA) prior to the beginning of each fiscal year. Tuition surcharges are not eligible A+ reimbursements. General tuition or fee increases made during the fiscal year will be considered only if state funds are sufficient to reimburse such requests.

### **2) May a student who is repeating a class, receive A+ benefits for that course?**

No. The student must pay the cost of tuition and any associated fees for any course that is repeated.

### **3) Must Title IV federal non-repayable aid (PELL/SEOG) be applied to tuition and fees before other expenses?**

Yes. Under current DESE rule PELL must be applied to A+ eligible costs (tuition and fees) before A+ is billed.

### **4) May a student switch majors and utilize A+ financial incentives?**

Yes.

### **5) What are the procedures for reimbursing out-of-state tuition if the student resides outside of Missouri, but is A+ eligible and attends a Missouri community college?**

A+ students must be graduates of an eligible Missouri A+ designated high school. A+ will reimburse only at in-state tuition rates. If the eligible A+ student moves out of Missouri, but attends a Missouri public community college or a career technical school, any difference in tuition will be the responsibility of the student.

**6) If a student only needs 11 hours to receiving his/her degree, will A+ pay for the additional hours over the degree?**

No, A+ will pay for only the 11 hours during that semester. Any other courses or hours within a course that exceeds 11 hours will be taken at the student's expense.

**7) What is the maximum number of hours a student can take in a semester?**

There is no maximum number of hours a student may elect to take in a semester. However, students who take 24 or more hours during a term will be charged with using two semesters of eligibility, 36 or more would count as three semesters toward the six terms/semesters eligible for reimbursement.

“The Department of Elementary and Secondary Education does not discriminate on the basis of race, color, national origin, sex, disability, or age in its programs and activities. Inquiries related to Department programs may be directed to the Jefferson State Office Building, Title IX Coordinator, 5th Floor, 205 Jefferson Street, Jefferson City, Missouri 65102-0480; telephone number 573-751-4581.”