

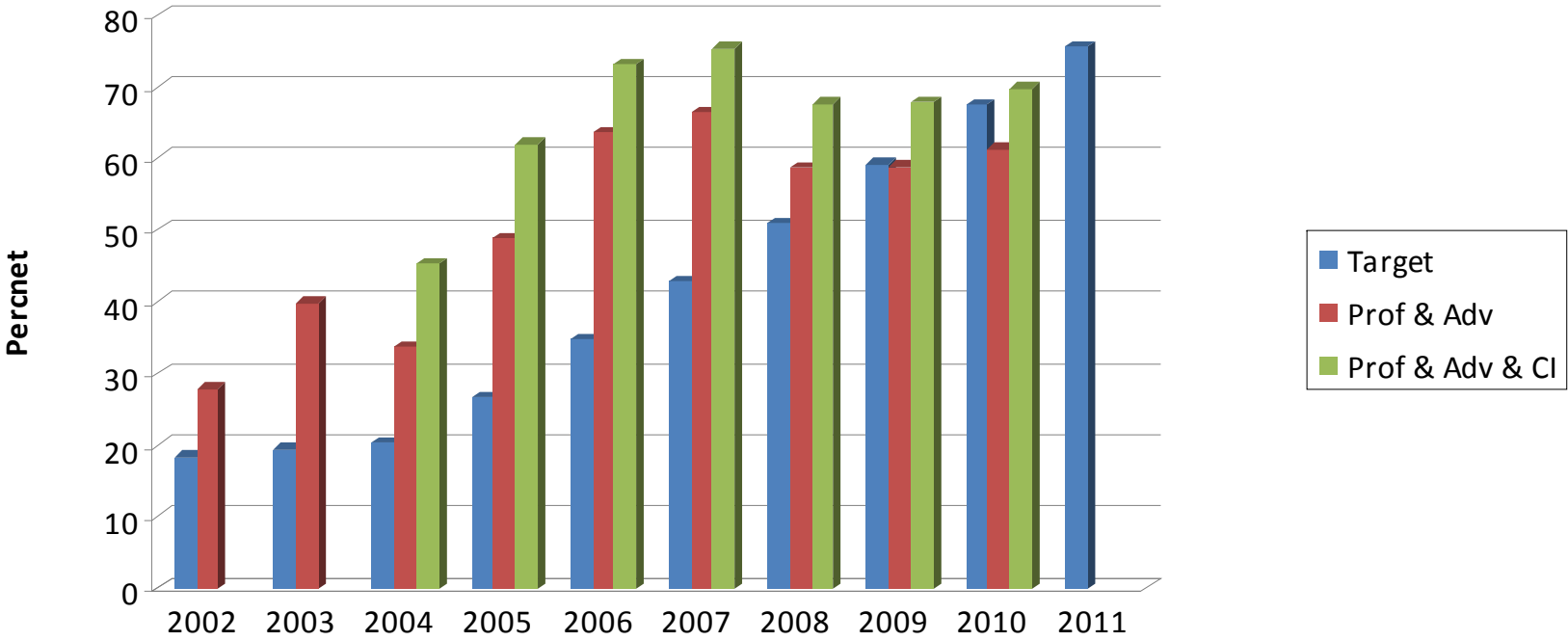
---

# **MARK TWAIN ELEMENTARY**

**2010-2011**

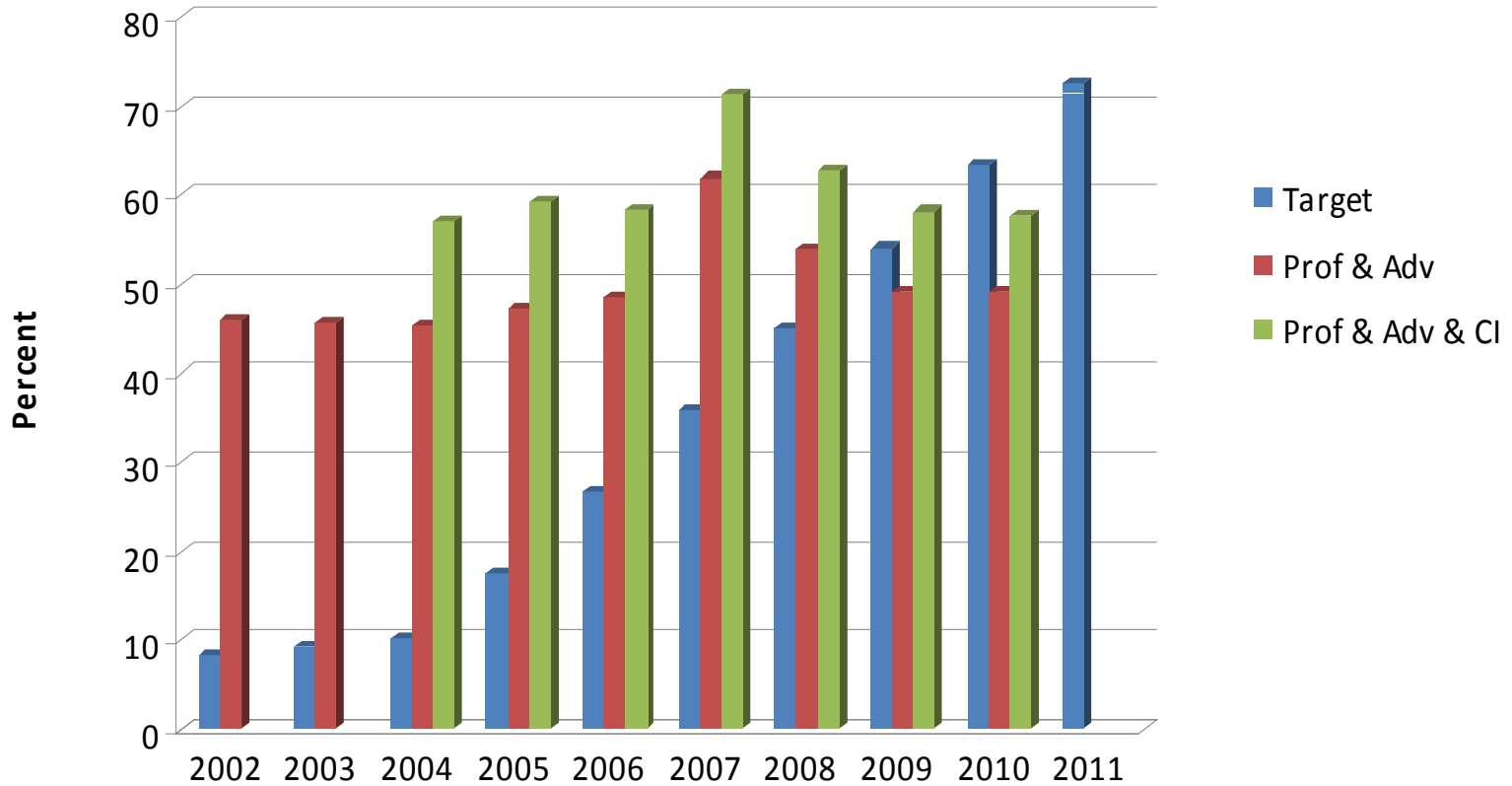
# 2010 MAP DATA

## Communication Arts AYP Mark Twain Elementary



# 2010 MAP DATA CONTINUED

## Mark Twain-Math AYP

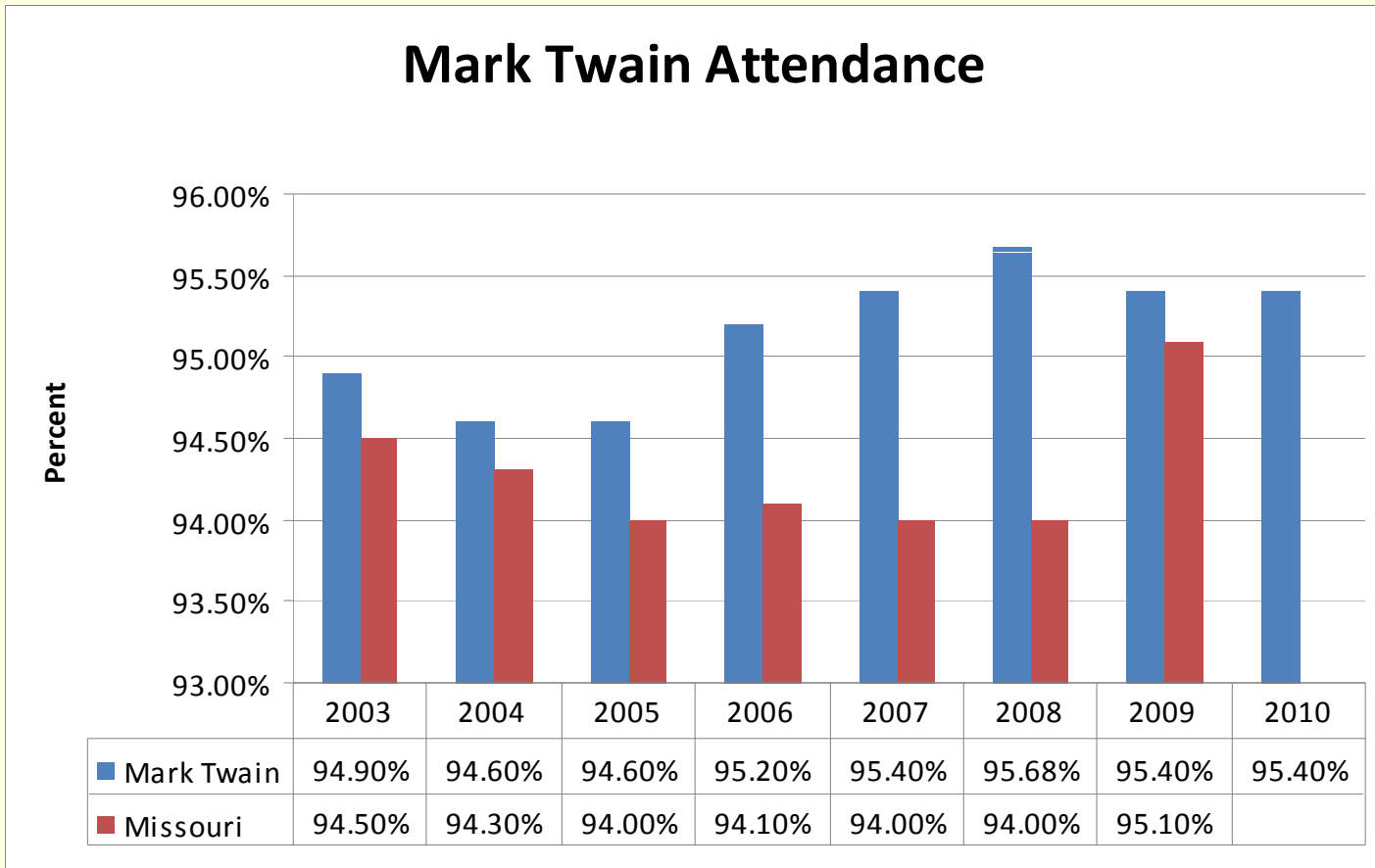


# STUDENT ACHIEVEMENT

---

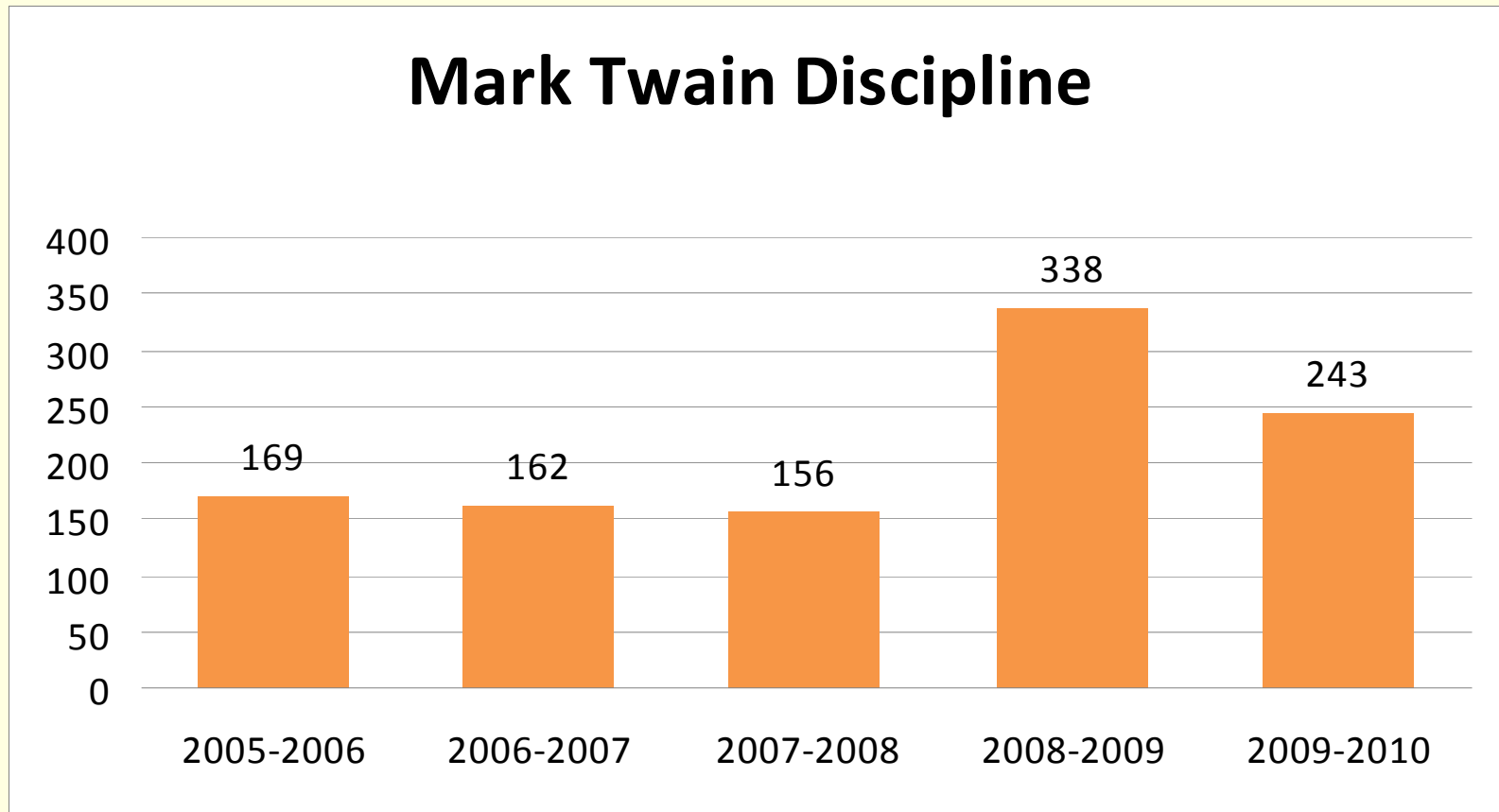
- Building Goal: Mark Twain will focus on improving student achievement in the areas of mathematics and communication arts.
  - Strategies
    - Flexible Grouping
    - Small Group Instruction
    - Title & SPED Push-In & Pull-Out
    - Building-Wide Math Supplement

# 2010 ATTENDANCE DATA



# 2010 POSITIVE BEHAVIOR DATA

## Mark Twain Discipline



# STUDENT BEHAVIOR & CHARACTER

---

- Building Goal: Continue to promote positive behavior and good character traits.
  - Strategies
    - In-Service Training for Staff
    - Buddy Classrooms, Check-in/Check-out, Mentoring Programs
    - Paws for Praise
    - Small Group Classes

# TECHNOLOGY

---

- Building Goal: Continue use of technology to enhance instruction in the classroom.
  
- Strategies
  - SMARTBoards
  - Online instructional supports
  - Infinite Campus Parent Portal
  - Increase in Teacher Web Pages
    - Parent Communication
    - Links to instructional sites

# AT-RISK STUDENTS

---

- Building Goal: Increase Achievement of At-Risk Students
  - Strategies
    - Flex Grouping and Small Group Instruction
    - Title Push-In & Pull-Out
    - SAT Team
    - Individual Meetings

---

# **MARK TWAIN ELEMENTARY**

**2010-2011**