

RTI/RTC School Improvement Plan

Rolla Public School Board Presentation

November 12, 2009

Dr. Janece Martin

Jmartin@rolla.k12.mo.us

500 Forum Drive

Rolla, MO 65401

573-458-0160X16010



08-09 SIP Goals Met

- Goal One: Each student will meet the academic & skill performance standards on district, state, and national tests for career education.

Strategies

- Twenty-five percent of secondary students who are graduating program concentrators took the skills assessments with a 62% pass rate in the spring of 2009
- Thirty-three percent of post-secondary graduates took an industry-recognized skills assessment with the required 71% pass rate met upon completion of program



TECHNICAL SKILLS ASSESSMENT DATA FOR 08-09

State Required % of Completers of Programs to Take Technical Skills Assessments (TSA'S) For 2008-2009	State Required Pass Rate 2008-2009	Secondary Students % Taking Test 2008-2009	% of Pass 2008-2009	% of Pending Test Results 2008-2009	% of Students Failing 2008-2009	% of RHS & Adults 2008-2009	% of Consortium & Sending School Students
Secondary 25% Taking Test	61.60%	35.50%	63.60%	27.30%	9.10%	100%	Unknown
Adult 33% Taking Test	71%	79.40%	90%	5%	5%	100%	Unknown

*Sending School Students who attended RTI/RTC were tested



TECHNICAL SKILLS ASSESSMENT DATA FOR 08-09

- **Rolla High School and RTI/RTC Adults students did very well**
- **Will need to focus on data collection for sending schools and adult consortium members for 2009-2010 Perkins and SIP Plan Goals**
- **More stringent requirements in the future**
 - **Over the next 2 years, all secondary and post-secondary students, who are considered concentrators, will be required to take skills assessments and meet the required pass rate**
 - **Identify skills assessments/certification exams for all programs by May 2010**
 - **Determine options for financing of required testing**



08-09 SIP Goals Met

- **Goal Two: RTI/RTC will recruit students to meet an average of 15 FTE's per instructor for RTI/RTC programs, with an emphasis on non-traditional students for all programs.**
 - **All programs and classes met the goal except-**
 - **Vocational Preparation, Digital Electronics, Industrial Maintenance did not meet 15 FTE standard**
 - **Vocational Preparation, Digital Electronics & Industrial Maintenance programs are no longer being offered at RTI**



08-09 SIP Goals Met

- **Goal Three: RTI/RTC will maintain its regional influence through excellence in career education programming.**
 - **Respiratory Therapy recognized as one of the top ten programs in the United States**
 - **Program accreditations received in Radiology, Ultrasound, HVAC, and began accreditation process for Woodlinks (Wood Manufacturing & Design)**
 - **Career Prep Certificates awarded to 57 students from RTI/RTC**



08-09 SIP Goals Met

- **Goal Four: RTI/RTC will promote embedded credit offering to increase sending school student numbers.**
 - **Met with participation of 10 of 11 sending schools awarding embedded credit**
 - **Have expanded to include Rolla High School students for 09-10 school year**
 - **All sending school students attending RTI/RTC are required to sign up for embedded credit**
 - **43 students at RTI/RTC must successfully complete embedded credit in order to graduate in spring 2010**
 - ❖ **Still do not have Belle School District as a participant**



New SIP Plan for 2009-2010

Goals and Strategies developed by PLC Committees, CSD Committees, and Building Committees

- **In August, committees met and reviewed SIP Plan from last year and evaluated programs and where they stood on the committee's goal and strategies**
- **In September and October, committees began development of new goals and strategies for 2009-2010**



Goal One: Each student will meet the academic & skill performance standards on district, state, and national tests for career education.

Measured by:

- **Performance rates above the state/national adjusted levels for state certification pass rates, skills competency performance levels, SMART Goal data sheets, and end of course exams as reported in CORE Data and Perkins**
- **Eighty percent of adult student population scores at level three or better on three WorkKeys assessments**



Strategies for Goal One

- **Improve pre/post test scores by encouraging the development of students' abilities to solve problems, work in teams, and be competent in critical work skills such as, computer literacy and the application of math, science, and communication arts with emphasis on improving scores on end of course exams and WorkKeys scores (Perkins Improvement Plan proposal for raising the 1s1 Academic Attainment Proficiency Credential by 1% for Perkins performance levels)**
- **Enhance student achievement by development and implementation of learning strategies such as MAX teaching, the philosophies of Rosenshine and Furst, Ruby Payne, etc**
- **Improve State/National Board Registry/Certification rate by 2% increments until overall RTC health programs have a student pass rate of 95%**

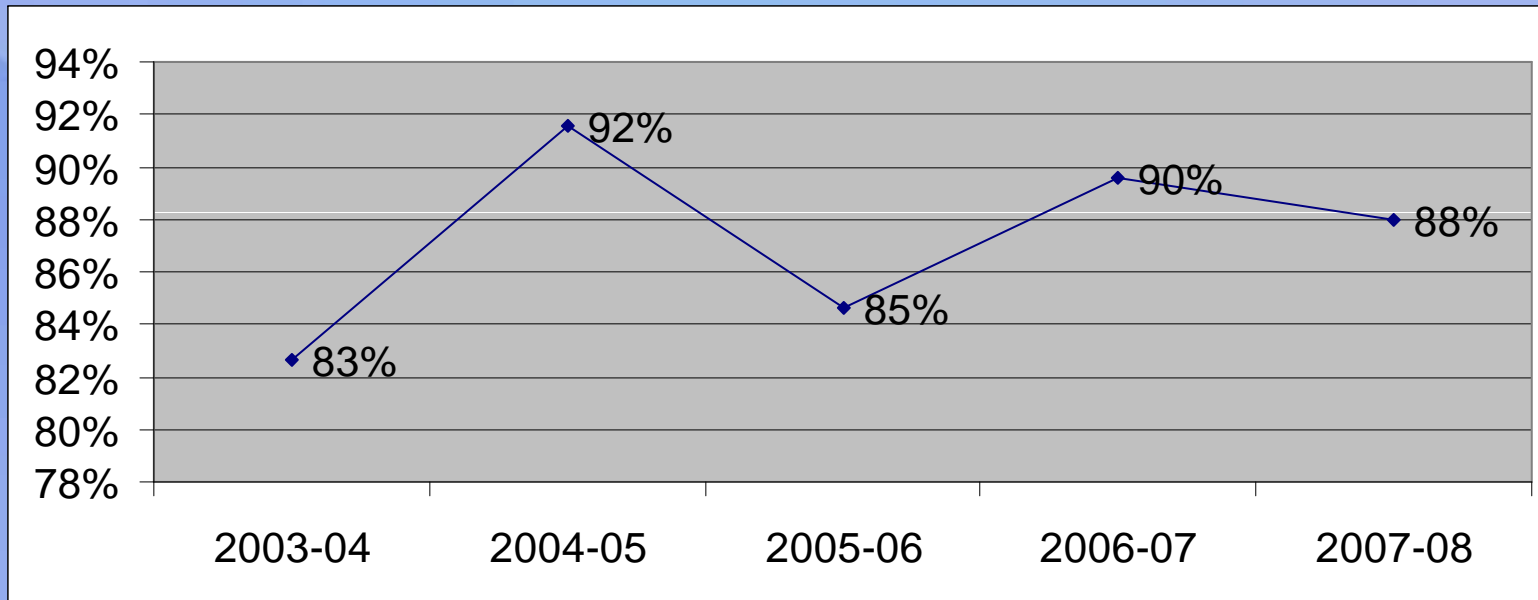


Goal One Strategies (cont)

- **By May 2010, identify skills assessments/certification exams for all programs**
- **By 2012, increase to 100% the percentage of qualifying secondary and post-secondary graduates taking and passing skills assessments**
- **Within 3 years, increase pass rates for end of the year exams (TSA, CST, Registry Exams, National Board exams) to a 90% pass rate**
- **Within 3 years, increase student retention until 90% of students successfully complete their program**
- **During the 2009-10 school year, decrease the number of D's and F's by 10%**



Initial Data About Retention Rate



Goal Two: RTI/RTC will recruit students to meet an average of 15 FTE's per instructor with an emphasis on non-traditional students.

Measured by:

- **Data collected on enrollment and verified with Core Data and Perkins reporting and SMART Goal data sheets**



ROLLA TECHNICAL INSTITUTE NON-TRADITIONAL STUDENTS

2009-2010	2008-2009	2007-2008
159	252	200



Larry Nash conferring with non-traditional students at RTI



Strategies for Goal Two

- Develop methods to recruit secondary and adult students, including non-traditional students, through development of program videos, brochures, web site development, and development of a "CROW" show to enhance open house/recruitment events
- Establish and expand career academies at RTI/RTC in the fields of information technology, graphic design, and construction trades along with Programs of Study for all students
- Annually graduate at least 75% of the 25 students in each cohort of the Health Academy at RTC
- Continue to refine and expand the embedded credit process with sending schools and Rolla High School students with participation to increase by 10 % yearly to 100% participation
- Research and develop a transition to two-hour blocks for all secondary RTI/RTC programs for implementation in fall 2011



Goal Three: RTI/RTC will maintain its regional influence through excellence in programs.

Measured by:

- **Achieving accredited status in various programs and SMART Goal data sheets**



Strategies for Goal Three

- **Completion of semi-annual meetings of all program advisory boards for approval and updating of skill standards, budgets, and curriculum**
- **Development and implementation of Career Prep Certification program by spring 2010**
- **Continuation of national accreditation process for Paramedic program with completion by 2012**
- **Development of an Information Technology Academy SMART Goal to improve the implementation of articulation agreements with higher education and enhance curriculum**
- **Continue to improve by 3% annually the number of career education completers who are placed to meet the APR standard of H1/H2**



Career Prep Certificates Award 08-09

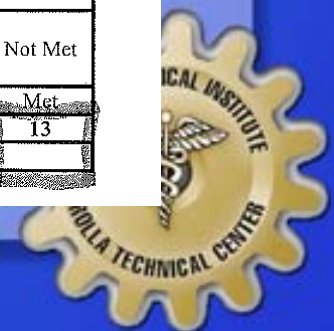
• Belle	5	• Rolla	6
• Bourbon	3	• Salem	5
• Cuba	3	• St. James	1
• Licking	9	• Steelville	3
• Newburg	11	• Vienna	2
• Owensville	9		

TOTAL 57



Initial Data: Career Education Courses Offered and Placement for APR

District Name: ROLLA 31 County/District Code: 081096							
MSIP Standard/Indicator	Status Points	Progress Points	Total Points Earned			Points Required (Minimum)	Met/Not Met
			Status	Progress	Status + Progress	Status + Progress	
9.3 ACT	H1 =5	A=1 RA=1 3/2= 0	5	1	6	4	Met
9.4*1 Advanced Courses	H1 =5 Combined=4	A=2 RA=1 3/2=0	5	2	7	4	Met
9.4*2 Career Education Courses	H2 =4 Combined=4	A=2 RA=2 3/2=0 @	4	2	6	4	Met
9.4*3 College Placement	H1 =5 Combined=4	A=2 RA=2 3/2=0	5	2	7	4	Met
9.4*4 Career Education Placement	Avg =3 Combined=4	A=2 RA=3 3/2=0	4	3	7	4	Met
9.5 Graduation Rate	H2 =4	A=1 RA=1 3/2=0	4	1	5	4	Met
9.6 Attendance Rate	Avg =3	A=0 RA=0 3/2=0	3	0	3	4	Not Met
9.7 Subgroup Achievement	H2 =4		4	NA	4	4	Met
Total Standards Met							13
Performance Accreditation Rating							



Initial Data: Career Education Course Enrollment and Placement

9.4*2 Career Education Courses	2005	2006	2007	2008	2009	STATUS
Units of Credit Times Enrollment in Approved Career Education Courses	1091.0	1692.0	1258.5	1831.0	850.5	
Grades 11-12 Enrollment Times Credits Possible	5,026	5,019	4,998	4,837	4,725	
Percent of Credits Earned in Career Education Courses	21.7	33.7	25.2	37.9	18.0	27.3
9.4*1 Advanced and 9.4*2 Career Education Courses	2005	2006	2007	2008	2009	STATUS
Units of Credit Times Enrollment in Approved Advanced & Career Education Courses	3461.0	4439.0	3982.5	4481.0	3566.0	
Grades 11-12 Enrollment Times Credit Possible	5,026	5,019	4,998	4,837	4,725	
Percent of Credits Earned in Advanced and Career Education Courses	68.9	88.4	79.7	92.6	75.5	81.0
9.4*3 College Placement	2004	2005	2006	2007	2008	STATUS
Number of Graduates Entering College	227	245	248	258	217	
Number of Graduates	294	314	311	315	306	
Percent of Graduates Entering College	77.2	78.0	79.7	81.9	70.9	77.5
9.4*4 Career Education Placement	2004	2005	2006	2007	2008	STATUS
Number of Graduates Completing a Career Education Program	103	149	112	130	127	
Number of Graduates Completing a Career Education Program Placed in Occupations Relating to their Training, Attending College, or in the Military	76	110	86	100	103	
Percent of Career Education Completers who are Placed	73.8	73.8	76.8	76.9	81.1	76.5
9.4*3 College Placement & 9.4*4 Career Education Placement	2004	2005	2006	2007	2008	STATUS
Number of Graduates Entering College or Placed in an Occupation Related to their Career Education Training or the Military	260	302	288	296	245	
Number of Graduates	294	314	311	315	306	
Percent College and Career Education Placement	88.4	96.2	92.6	94.0	80.1	90.3
9.5 Graduation Rate	2005	2006	2007	2008	2009	STATUS



Professional Development Budget for 2009-2010

SIP GOAL	Perkins Prof. Dev. Secondary	Perkins Prof. Dev. Post-Secondary - RTC	Perkins Secondary RTI	PDC Secondary RTC	PDC Prof. Dev. Secondary RTI
Beginning Balance	\$2,000.00	\$7,019.00	\$11,470.00	\$2,169.00	\$8,678.00
Mentoring/NTI (SIPG 3)	\$800.00		\$332.53		
MOACTE - Summer Conference (SIPG 1 & 3)	\$272.68	\$395.61	\$4,988.30		
Industry Training (SIPG 3 & 1)	\$80.65	\$2,365.16	\$900.00	\$2,169.00	\$225.65
Online Training Prof. Development (SIPG 1 & 2)		\$1,129.50	\$425.00		\$1,000.00
Accreditation (SIPG 3)			\$635.08		
Career Prep Certificate (SIPG 3)			\$100.70		\$70.00
Student Organization (SIPG 1, 2, 3)	\$500.00		\$2,504.09		
Fall Conference Counselors (SIPG 2)					\$50.00
NCA Accreditation (SIP 3)					\$183.16
Fall Conference Options Training (SIPG 2)					\$195.65
Fall Conference Administration (SIPG 1,3)					\$200.00
Spring Admin Conference (SIPG 1,3)			\$1,500.00		
Building Bridges Conference (SIPG 2, 3)		\$1,000.00			
Books on Assessment (SIPG 1)					\$500.00
Ending Balance	\$346.67	\$2,128.73	\$84.30	\$0.00	\$6,253.54



Industry Training & Professional Development

Lynne Bergman - Training Health Science Academy	\$1,376.32	Perkins Sec. RTC
Neal Broyles - Certification Training Green Recovery	\$1,200.00	Perkins Sec. RTI
Neal Broyles - Certification Training Green Recovery	\$623.07	PDC Sec. RTI
Leigh Ann Trumbrink - PLTW Certification Training	\$2,252.98	Perkins Sec. RTI
Don Block & Stephanie Broyles - NCA Accreditation	\$625.00	Perkins PS RTC
Terry Brookshire & Mitch Rightnowar - Industry Training	\$2,500.00	Perkins Sec. RTI
Don Block & Angi Yowell - Graphic Design Academy	\$3,535.10	Perkins Sec. RTI

